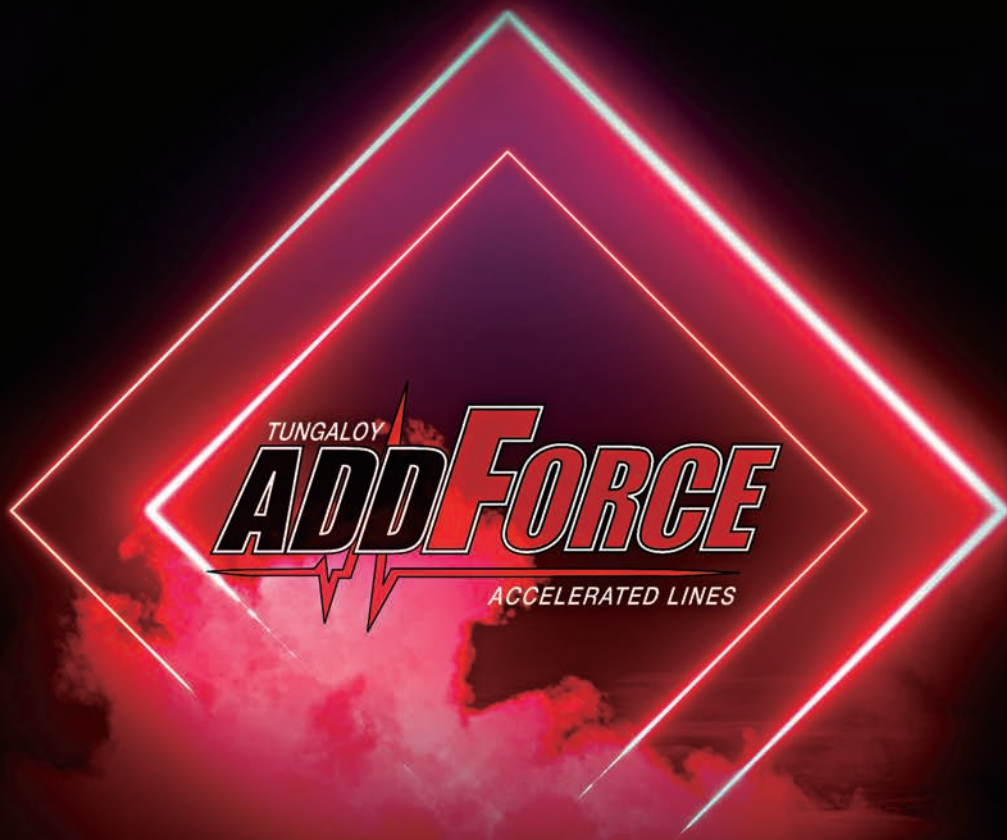


we improve...
we evolve...
we **ADD**



Tungalooy Accelerated Lines - Leading in Innovation



tungalooy.com



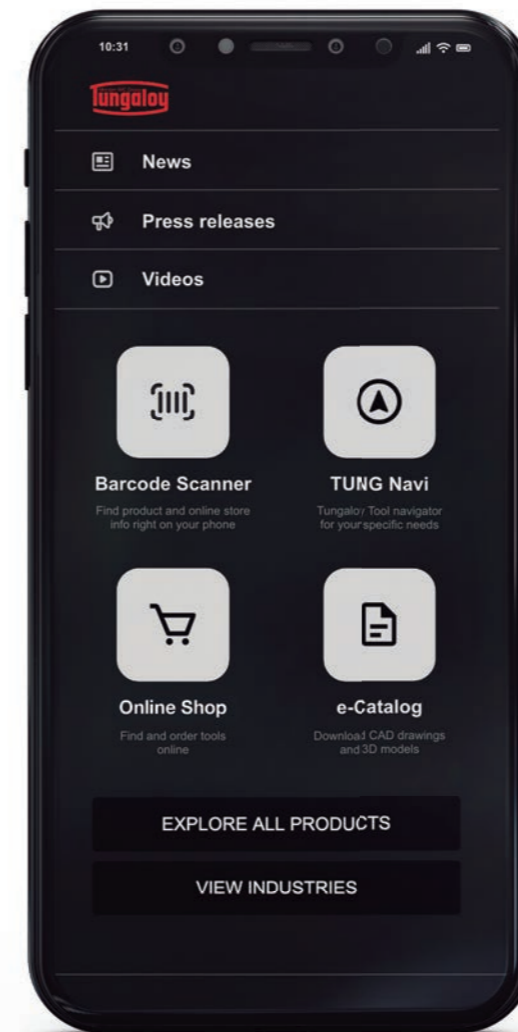
Tungaloy's Insights – Smart Manufacturing

Tungaloy, as one of the leaders in the metal removal industry, offers the latest innovations in grades and geometries for superb performance and tool life. In a competitive world eager to embrace Industry 4.0, Tungaloy provides an extensive portfolio with the latest digital tools to support our customers in making better tooling decisions to improve their competitiveness and productivity.

Find all product details in Tungaloy's updated e-catalog.

TUNGALOY THE APP

*Get access to all of
Tungaloy's digital info and tools!*



- Push Notifications
- Barcode Scanner
- Access to:
 - News
 - Press Releases
 - Technical Articles
 - Videos
 - Online shop
 - e-Catalog
 - TungNavi
 - Products
 - Industries
 - Insert Converter

and much more....



X

E

D

N

I

06

GRADES

Superior CVD & PVD Grades
CBN Innovations

12

GROOVING

AddForceCut
TungFeed-Blade
AddInternalCut
MiniVLockGroove
DuoForceCut

22

TURNING

AddMultiTurn
AddY-axisTurn
TungTurn-Jet
BoreMeister
ModuMiniTurn
TinyMini-Turn

36

MILLING

AddDoFeed
DoFeedTri
TungForce-Rec 04
Tung-Tri 04
AddForceBarrel
TungMeister
DoMultiRec
ExtendedForceMill

52

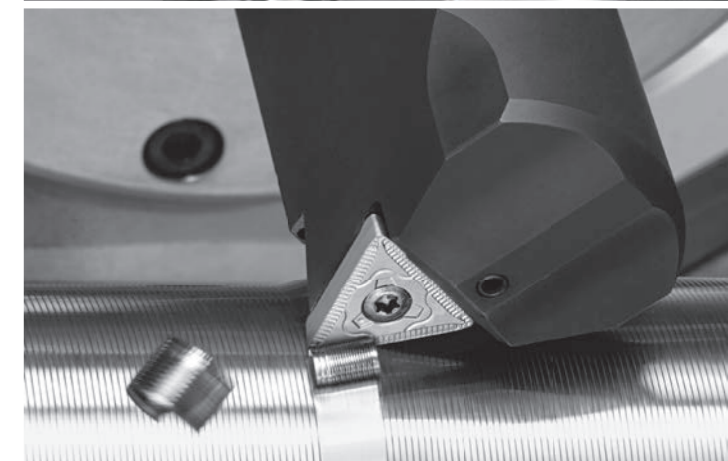
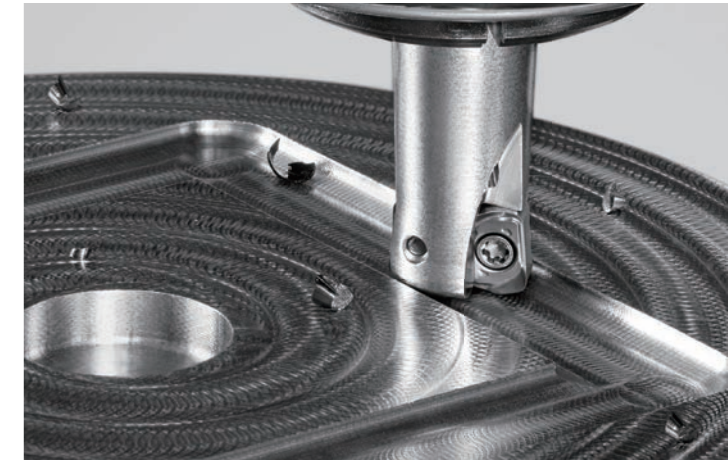
DRILLING

DrillMeister
AddMeisterDrill
DrillForce-Meister
DeepTriDrill

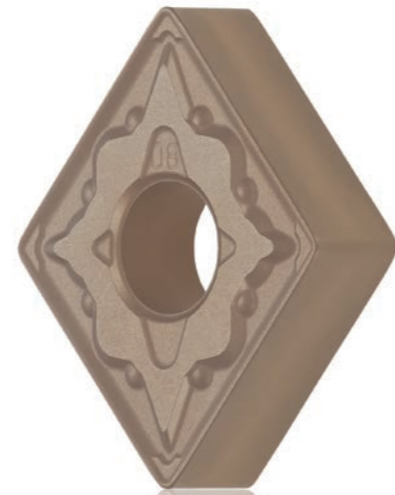
58

MATRIX

The first step to
your cost reduction



SUPERIOR CVD & PVD GRADES

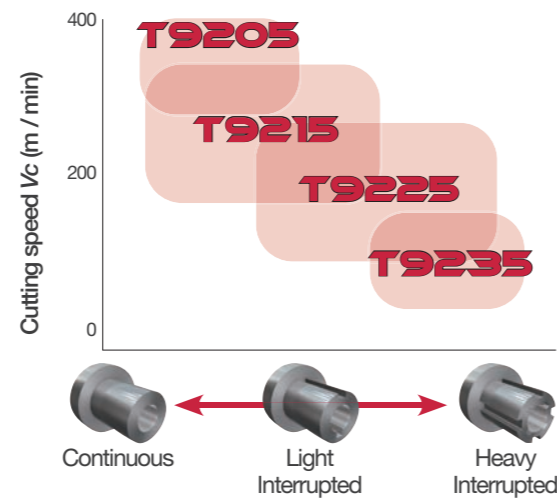


T9200 P M K

CVD grades with outstanding productivity, especially for steel turning

Nearly unbreakable CVD series for improved machining efficiency

APPLICATION AREA P

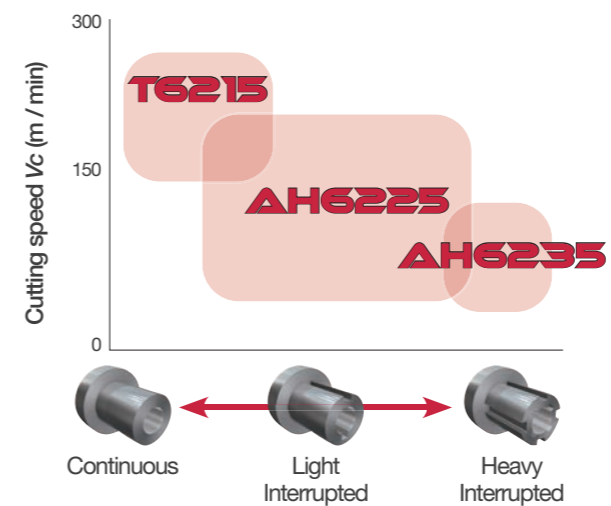


T6200 AH6200 M

Highly reliable CVD & PVD grades for stainless steel turning

Complete grade line up for stainless steel turning

APPLICATION AREA M

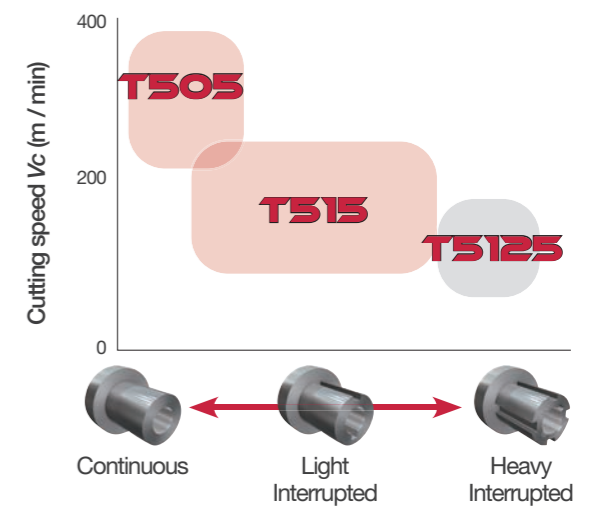


T500 K

Most optimal CVD grades for high speed machining of cast iron

The thickest coating layer of all Tungaloy's CVD grades ever

APPLICATION AREA K





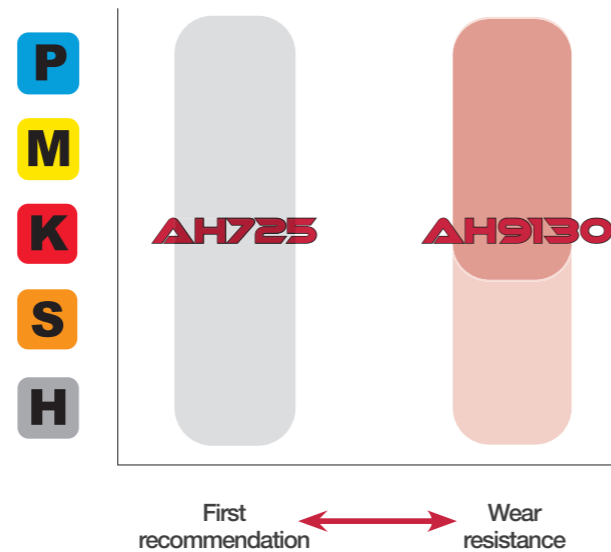
DMC drilling head for DrillMeister

AH9130

The latest PVD grade developed specifically for hole making applications

A good combination of wear and fracture resistance enhances the grade's tool life and wear prediction.

APPLICATION AREA



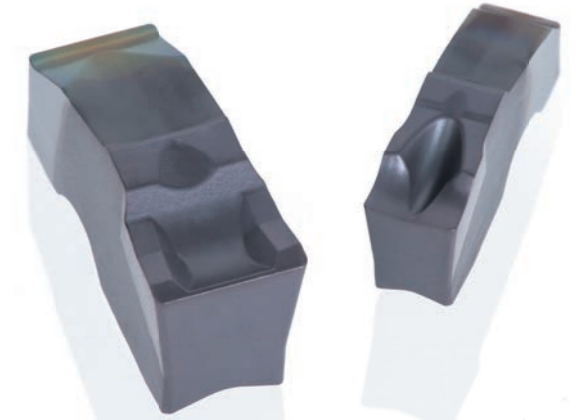
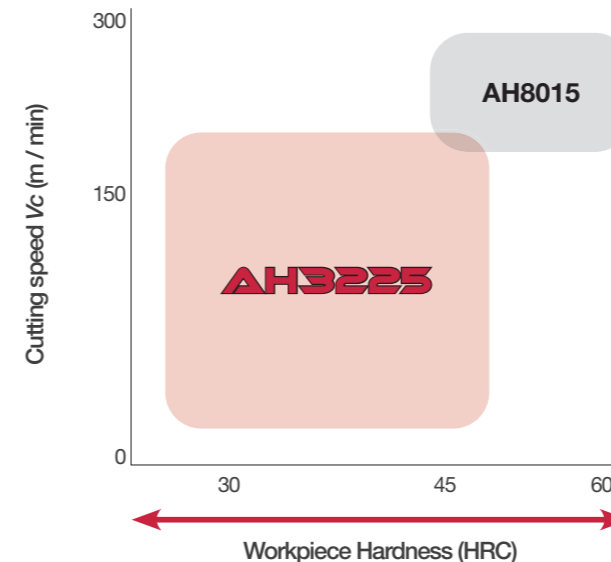
LNMU insert for AddDoFeed

AH3225 P M

A highly reliable grade for milling operations

Eliminates coating delamination and micro edge-chipping while impeding the progression of normal flank wear, providing long and predictable tool life in steel milling operations.

APPLICATION AREA



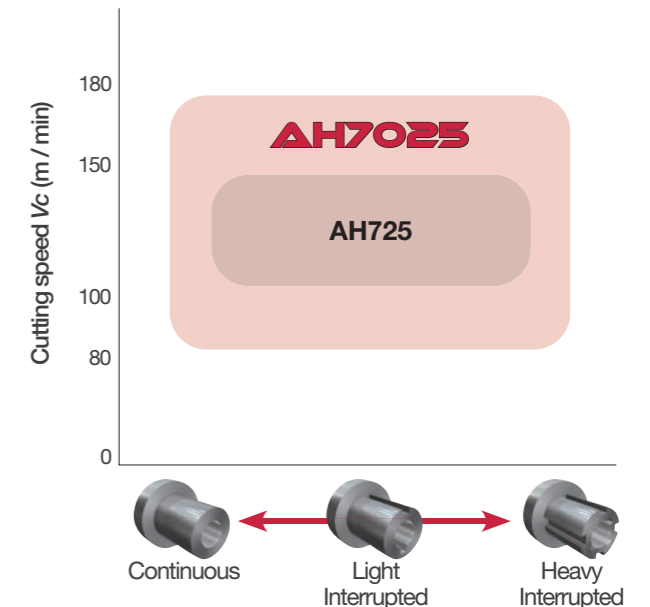
QGM / QGS inserts for AddForceCut

AH7025 P M

Dedicated grade for grooving applications featuring a good balance of wear and chipping resistance.

AH7025 uses the world's first coating technology of a nano-scale multi-layered AlTiN PVD coating with high Al content.

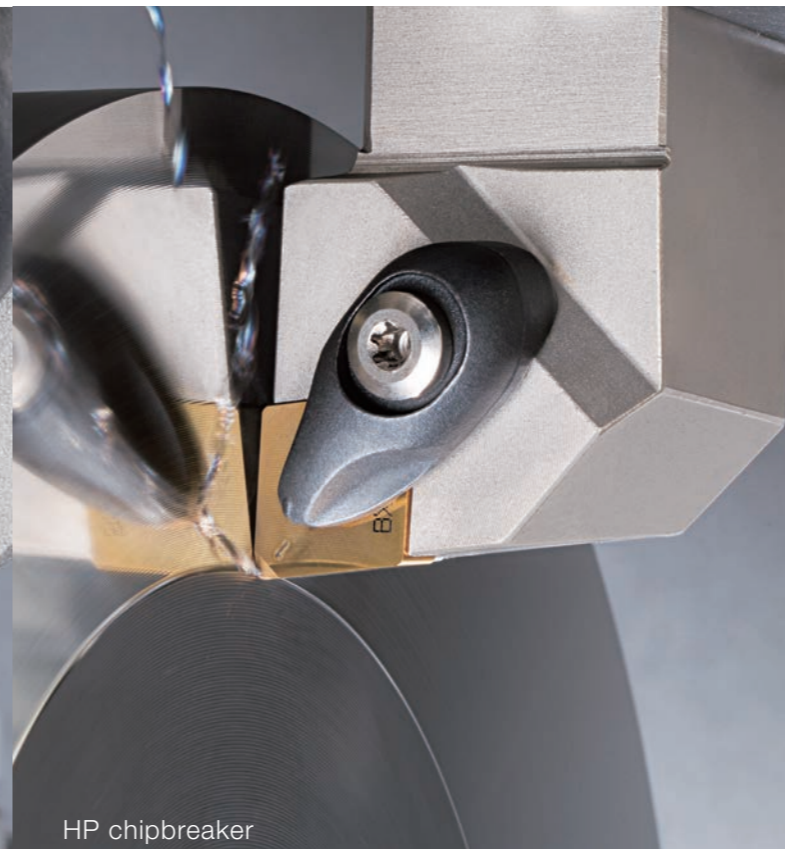
APPLICATION AREA



LATEST CBN INNOVATIONS



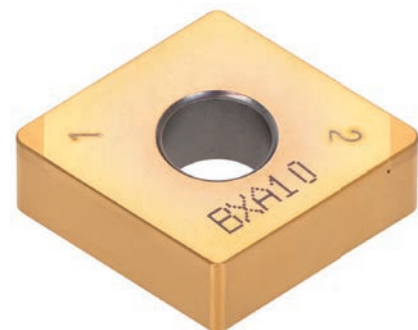
Wavy Joint



HP chipbreaker



HS chipbreaker



BXA10

Grade for continuous hardened steel turning

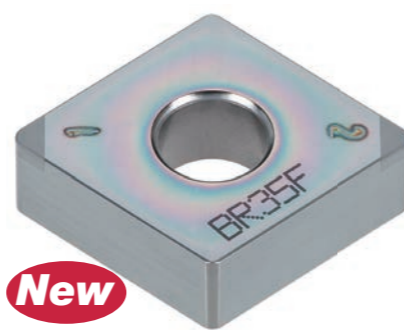
Incredible reliability with excellent wear resistance



BXA20

Versatile grade for continuous to light interrupted hardened steel turning

Enables stable machining at low to medium cutting speed



New

BR35F

Efficient grade for heavy interrupted hardened steel turning

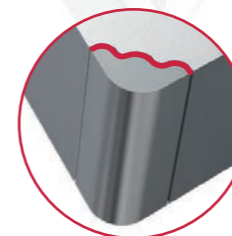
Incredible reliability with high fracture resistance



WAVYJOINT

For large depth of cut in hard turning up to 0.8 mm

The unique "wavy" contact surface enhances the brazing strength thus improves productivity with 1.6 times higher depth-of-cut compared to the conventional type.



CBN Tip Size: 200% larger for improved wear control in the cutting zone
Brazing Area: 160% larger for enhanced brazing strength



HP chipbreaker

Designed for precision machining of hardened parts

Optimized chipbreaker geometry significantly reduces cutting forces, ensuring long tool life



The **HP style chipbreaker** provides good chip control and prevents chattering



New HS chipbreaker

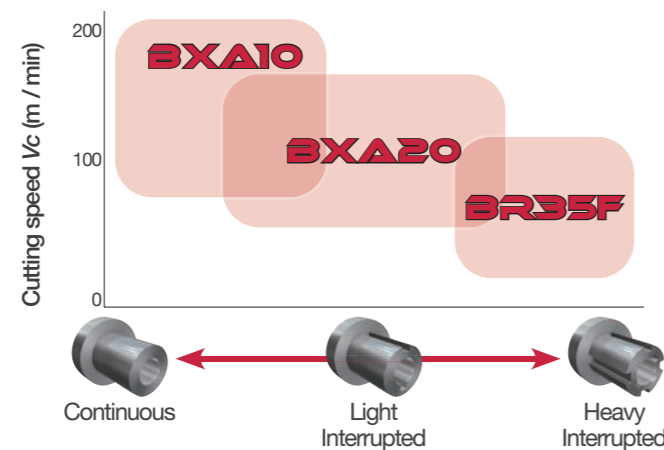
Optimized chipbreaker design for excellent chip control

Designed for high feed machining. Provides excellent chip control for a wide range of D.O.C. and feed rates.



The **HS style chipbreaker**, provides all-round chip breaking capability even at increased feed rates vs. competitors

APPLICATION AREA **H**

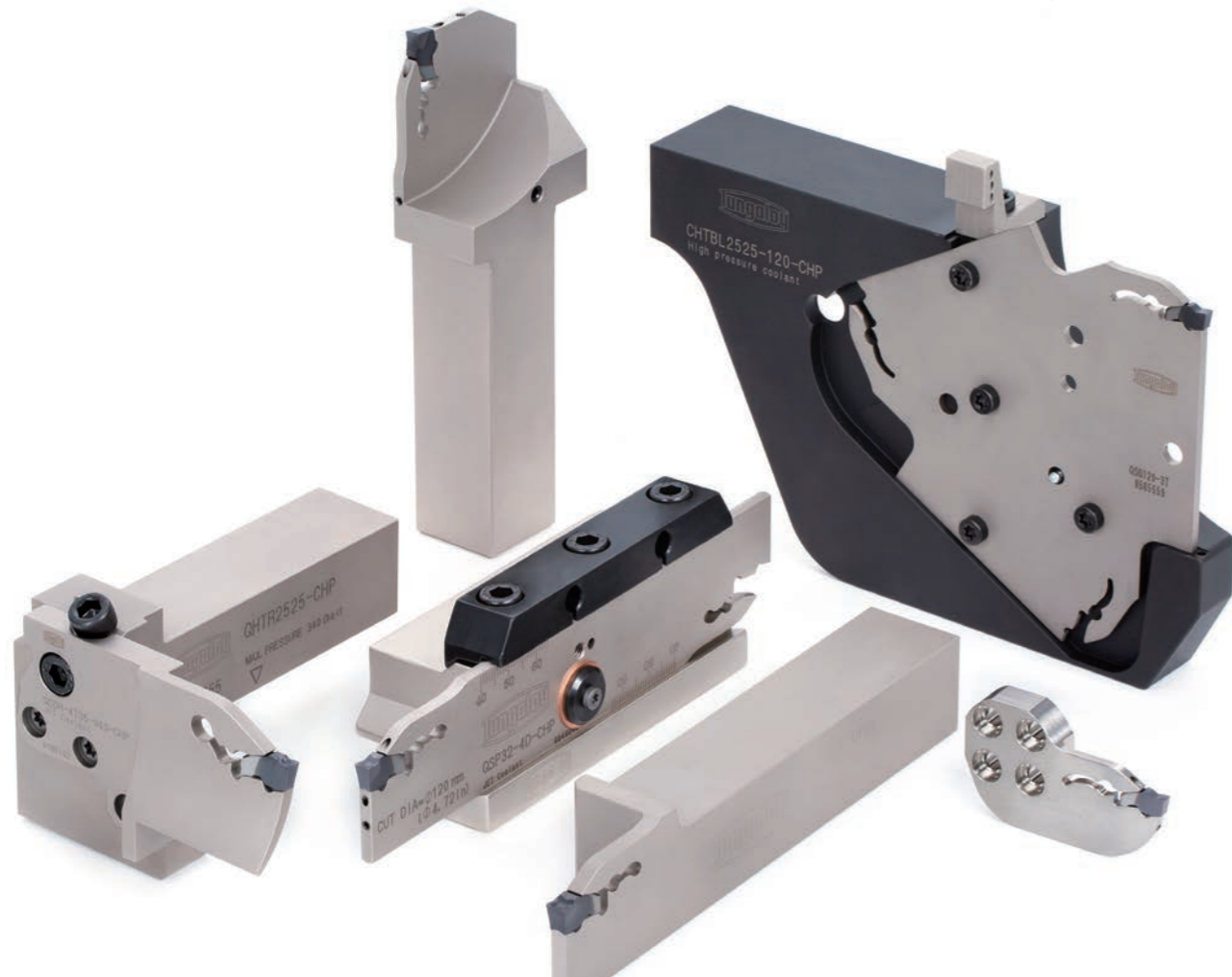
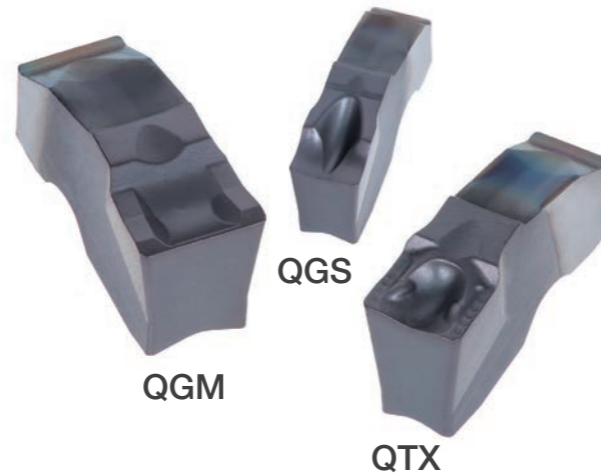


ADDFORCE ADDFCUT

Newly designed insert profile ensures unobstructed chip flow and consistent chip evacuation.

The insert is locked in three positions with the use of an insert stopper in the pocket. This design provides extremely rigid insert clamping.

QGM, QGS and **QTX** inserts
CW = 2, 3, 4, 5, 6 and 8 mm
 Max. grooving depths (for monoblock shanks): **CDX** = 33 mm



SUPERB STABILITY AND PRODUCTIVITY IN DEEP GROOVING AND PARTING-OFF OPERATIONS

ADD higher performance in deep grooving operations featuring a smart self-locking designed pocket without screw clamping

video



e-catalog



For more information

tungaloy.com 13



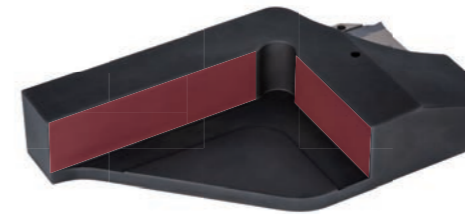
TUNG^{FEED}BLADE

Strong holder design ensures tool stability and productivity gains during demanding cutting conditions.



Specially designed tool block has two contact faces to provide enhanced tool rigidity.

The blades for TungCut series and the blades for the latest **AddForceCut** can share the same tool block.



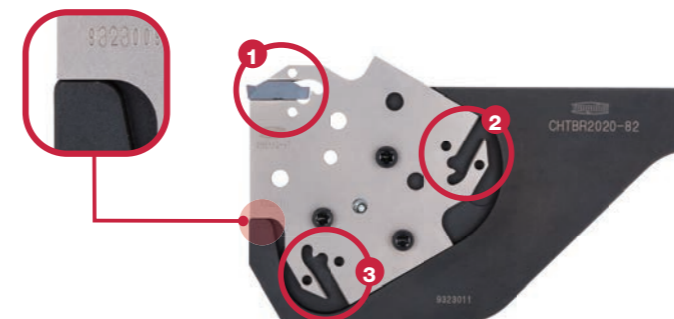
The blade for TungCut inserts also ensures strong insert clamping, providing high tool reliability.

The blade provides reduced tooling cost with three insert pockets, while its strong backing beneath the insert withstands heavy cutting loads during machining.

The latest **AddForceCut** blades that use a single-ended insert improves parting/cutting-off operations at increased feed rates.

Available inserts: **DGM, DGS, SGM, SGS, QGM, QGS, and QTX**

Max. parting diameters:
CUTDIA = \varnothing 52, \varnothing 82, and \varnothing 120 mm



video



e-catalog



For more information

tungaloy.com 15

NEW CHP BLADES FOR EXTREME PRODUCTIVITY

ADD speed and feed to your grooving and parting-off operations

UNIQUE 4-EDGED INSERT FOR SMALL INTERNAL GROOVING OPERATIONS

ADD stability and repeatability in small internal grooving operations with the unique insert clamping system



TCIG10... and **TCIG12...**

CW = from 0.5 to 3 mm

Max. insert cutting depth:

CDX = 3 mm

Min grooving dia:

DMIN = \varnothing 10.5 mm



ADD^{INTERNAL}CUT

The innovative clamping system eliminates insert movement caused by cutting forces.

Through-coolant holder delivers coolant from the outlet located near the insert, promoting effective chip evacuation from the cutting area.

Neutral designed insert can be mounted on either right- or left-handed holder.

video



e-catalog



For more information

tungaloy.com 17



HIGH PRECISION GROOVING AND THREADING TOOL SERIES FOR CNC automatic lathes

ADD a unique insert clamping system for extra tool rigidity

MINI ^{LOCK} VGROOVE

Perfect for grooving and threading bar stocks of 12 mm or smaller diameters

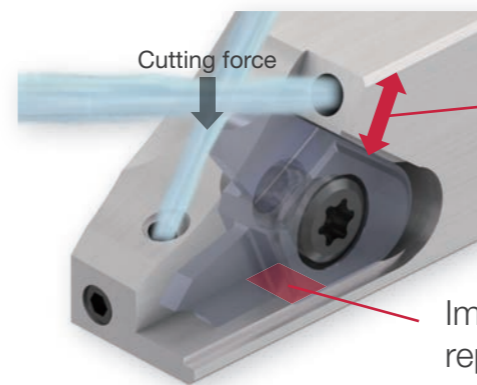
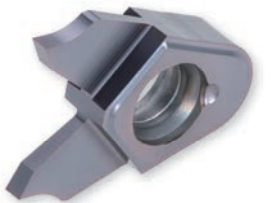
Available in 8x8, 10x10, and 12x12 mm square shanks with high-pressure coolant

VGP08... and VGP10

for Grooving
2 corner insert
CW = 0.33 - 1 mm

VGT10F...

for Threading
2 corner insert
Pitch = 0.4 - 2 mm
Cutting edge angle = 55°, 60°



A thick support restricts the insert movements during machining

Improves the cutting edge repeatability

video



e-catalog

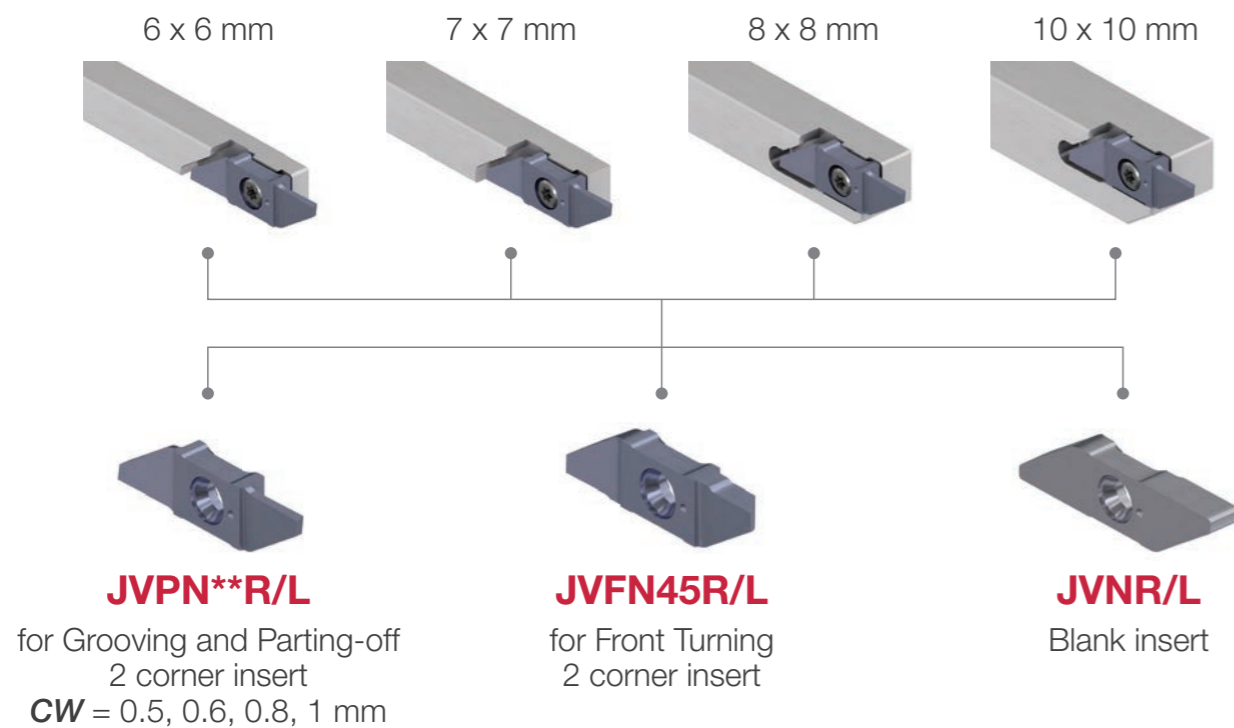


For more information

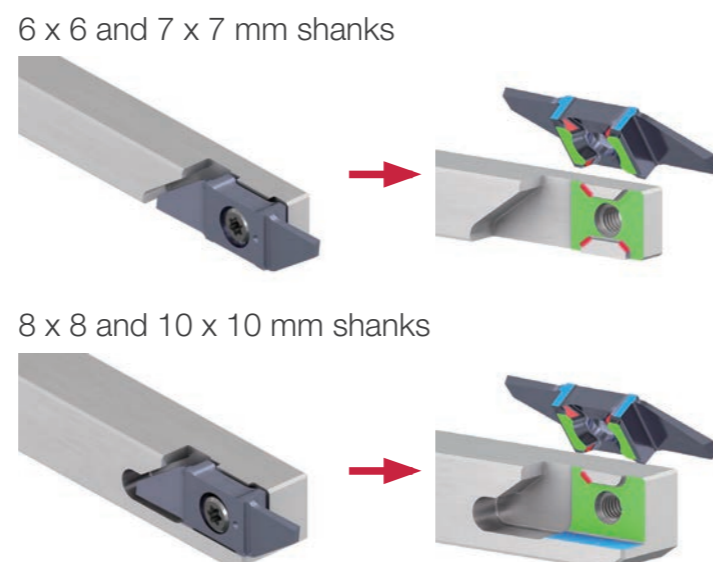
tungaloy.com 19

DUO**FORCE**FCUT

*New flexible tool series with unique insert clamping system.
Ideal for machining small parts with 12 mm or smaller diameters.*



6 x 6 to 10 x 10 mm shanks are available as standard. Innovative insert clamping allows the use of the same insert with all toolholders of different sizes.



A STEP FORWARD FOR TURNING AND GROOVING MINIATURE OPERATIONS

ADD flexibility and a wide range of operations with the new turning tool series for CNC automatic lathes and cam-driven lathes

video

e-catalog



For more information

tungaloy.com 21

ADD^{ULTI}TURN



THE ULTIMATE TOOL FOR MULTIPLICITY

ADD Front Turning, Back Turning, Profiling, and Face Turning, with **ONE SINGLE TOOL**

6C-TOMG 80° negative insert 6 cutting edges

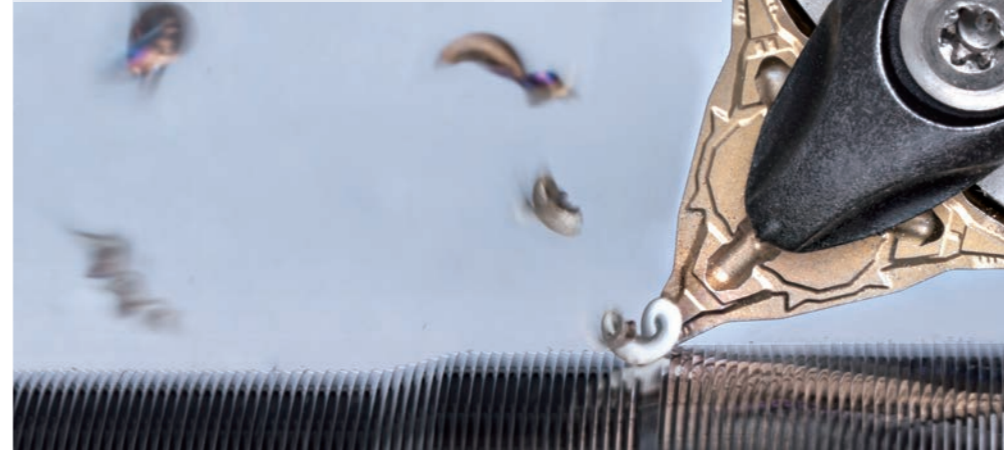


Unique concave-convex shape on the bottom of the insert provides outstanding clamping rigidity and securely locks the insert in place ensuring tool reliability when turning in any direction.

Cutting edge with a low approach angle allows high feed machining.

Also effective for removing burrs.

6V-TOMG 35° negative insert 6 cutting edges

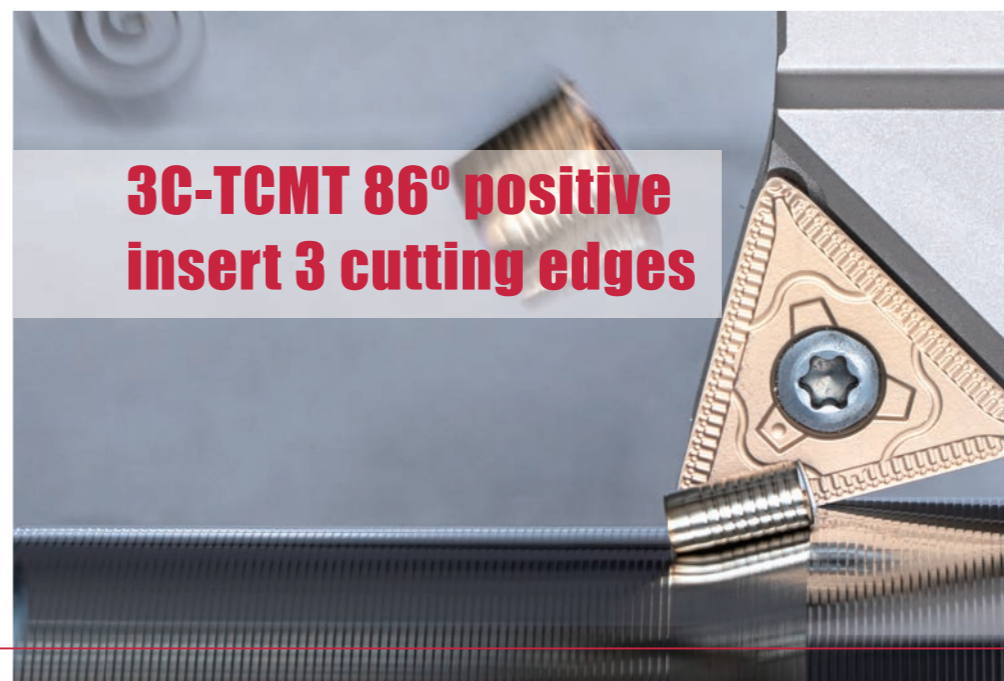


The positive triangular insert features 86° nose angle for enhanced cutting edge robustness.

The positive triangular insert has integrated wipers, which provide high surface finish quality at significantly increased feed rate.

Two types of double-sided negative inserts are available with 80° or 35° nose angles.

3C-TCMT 86° positive insert 3 cutting edges



AddMultiTurn can combine multiple processes in a single operation, maximizing machine utilization and productivity.

video

e-catalog



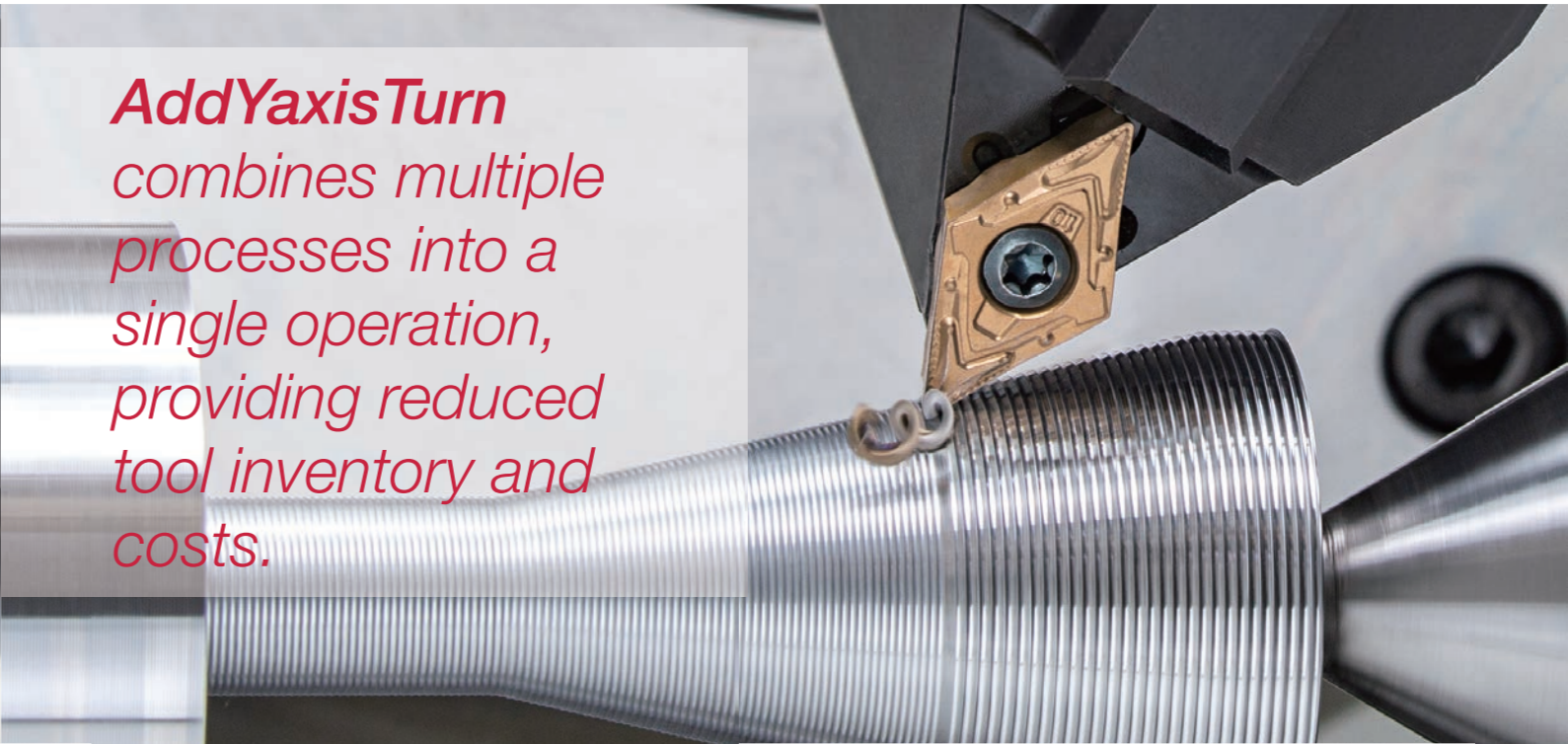
For more information

tungaloy.com 23

ADDY^{AXIS}TURN

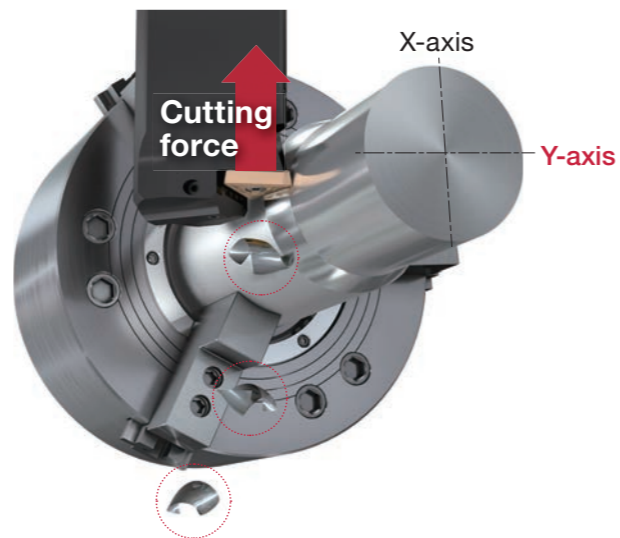
LEADING IN A NEW DIRECTION

ADD a turning point to increase your productivity

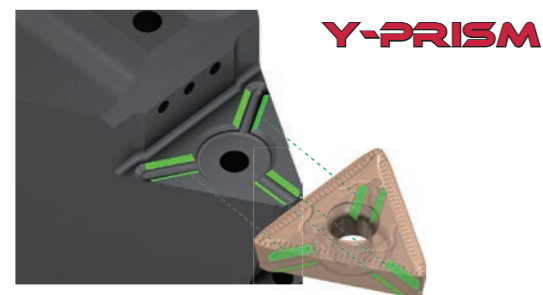


AddYaxisTurn combines multiple processes into a single operation, providing reduced tool inventory and costs.

By using the Y-axis instead of the conventional X-axis the tool can direct the cutting force in the longitudinal axis of the holder, the strongest part of the tool. This provides more security during the cutting process.



Y-PRISM's safe lock design has a rail on the toolholder and matching slot on the insert for tight interlocking and secure clamping. Prevents the cutting forces from affecting the insert position in any direction and ensures high stability.

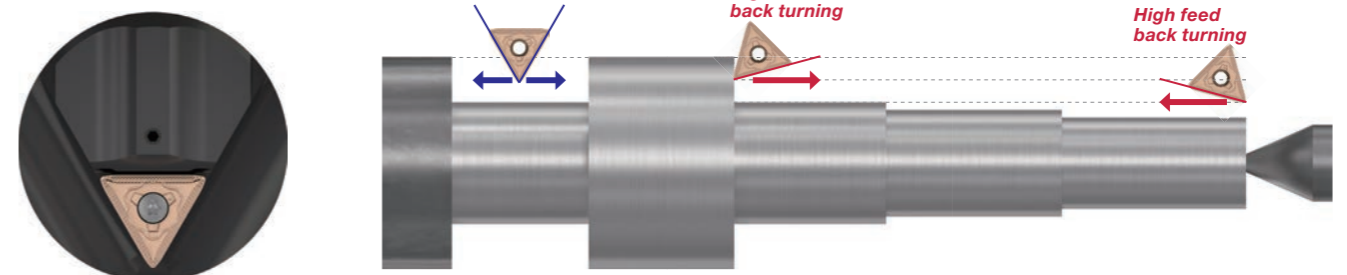


By simply rotating the tool along the axis, the cutting edge angle can be set to an optimum angle that enables the most effective entry into the cut.

The same tool can be used when turning either from the end of the part towards the chuck or turning away from the chuck to the end of the part.

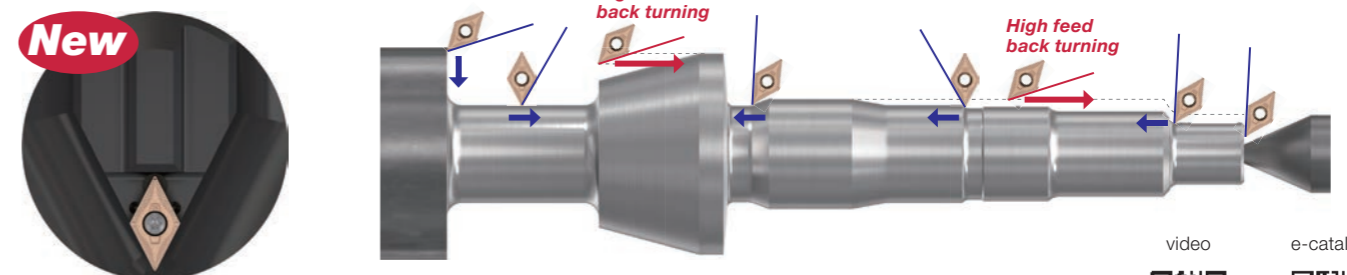
TCMT type

Single sided, 3 cutting edges
Max feed rate: 2 mm/rev



DCMT type

Single sided, 2 cutting edges
Max feed rate: 1.2 mm/rev



video



e-catalog



For more information

tungaloy.com 25



HIGH PRESSURE COOLANT SYSTEM

ADD productivity,
including turning of exotic materials

TUNG^TURN JET

Maximize your productivity with a wide range of high pressure coolant tools for each application

*General Turning - TungCap - Modular Tools
Grooving Tools - Threading Tools - Miniature Tools*



Two streams of coolant jets are directed to the rake and clearance surfaces of the cutting point, significantly increasing productivity.

Helps prevent crater wear from developing on the insert rake surface during high speed machining.

Provides effective chip breaking in high temperature alloys with chip control difficulty.

Provides extended tool life in stainless steel and high temperature alloys.

Also available in through-coolant toolholder system for Swiss machine applications that requires no coolant hose connection. Improves tool setup and machine downtime.

The top coolant nozzle can be adjusted for optimum coolant direction close to the cutting point.

video



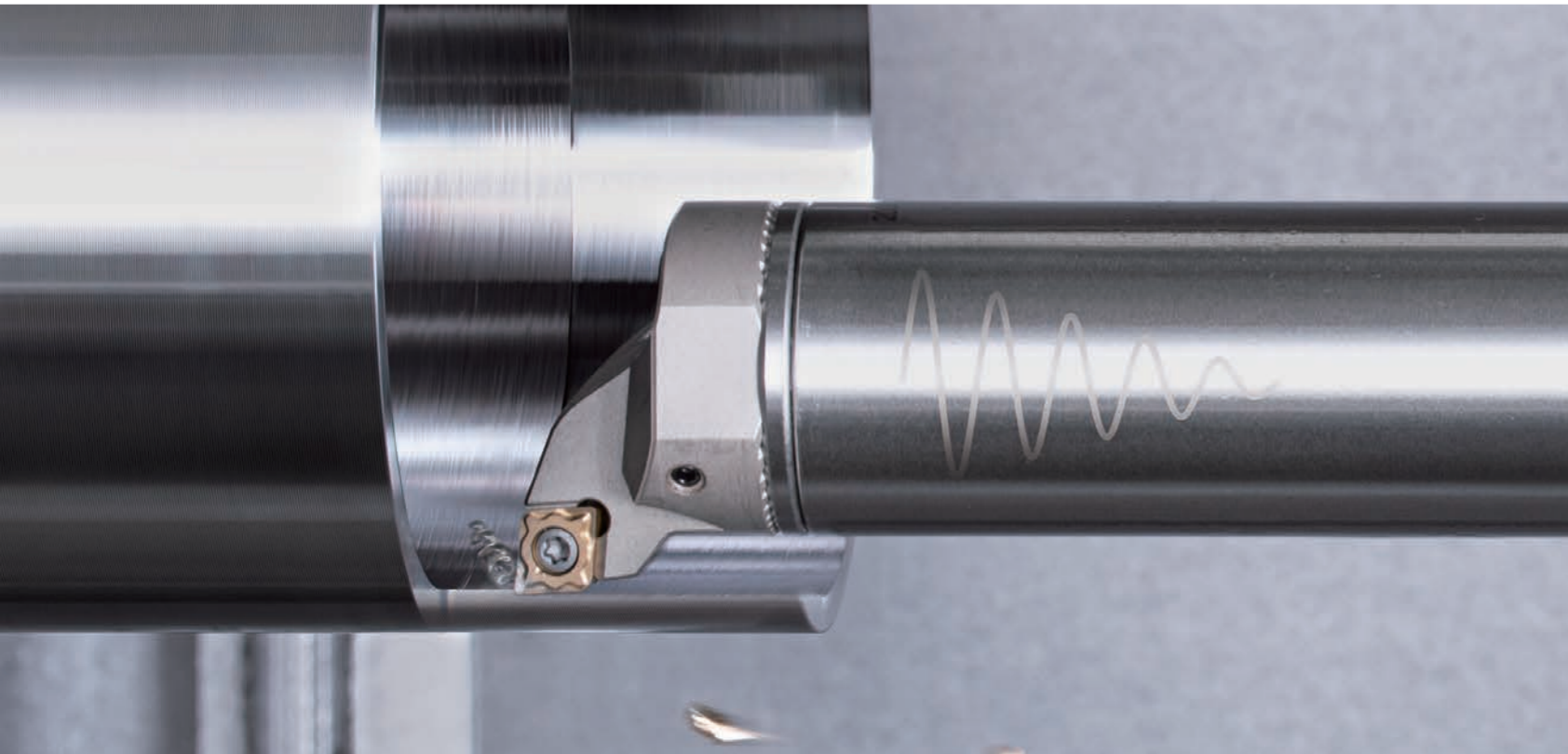
e-catalog



For more information

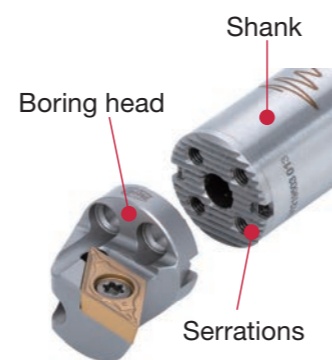
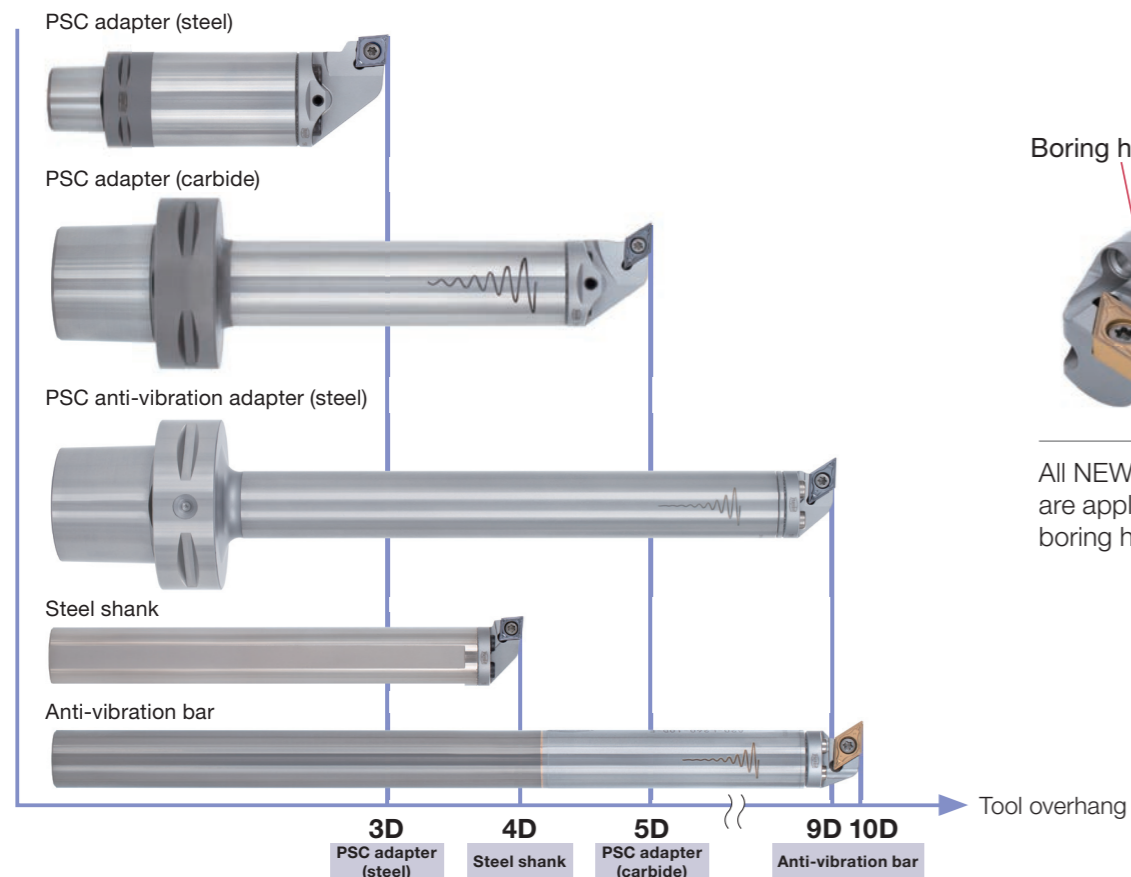
tungaloy.com 27

BOREMEISTER



VIBRATION-FREE SOLUTION FOR DEEP HOLE BORING

ADD stability and precision



All NEW shanks & adapters are applicable with existing boring heads.

Ultimate solution to conquer tool overhang challenges, chattering, noise and short tool life of up to 10xD.

Exchangeable head boring tool system with serrated interfaces for high precision and high rigidity indexing.

Through-coolant capability allows smooth chip evacuation in deep boring operations of up to 10xD.

PSC holders are also available, allowing coupling with a range of machine tools.

Dedicated setting device allows quick and accurate center height settings of the boring bar.

A wide range of boring heads are available, providing high parts quality in various boring operations



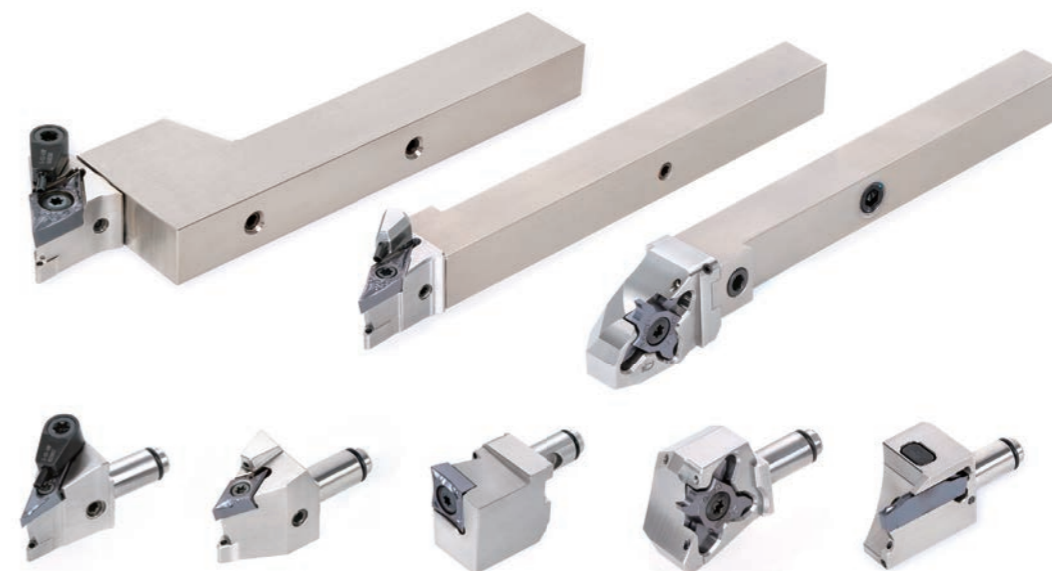
New AddInternalCut, TungCut, and AddForceCut heads



For more information

MODUM^{INI}TURN

Modularity and productivity with a wide selection of turning, grooving and threading heads



Substantially reduced setup time for maximum machine utilization.

Positioning accuracy for the same insert: $\pm 5 \mu\text{m}$

Quick tool change and setup is possible with simple exchanges of turning heads.

QC10, QC12 & QC16 type series

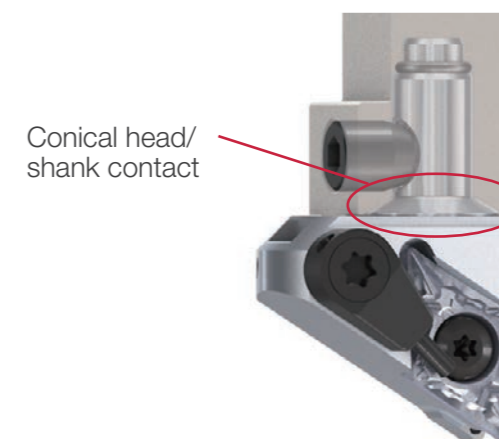
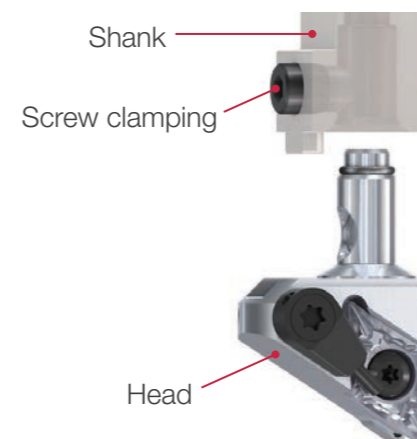
Unique coupling method provides stable head-shank connection and secure insert edge position for good repeatability and accuracy.

ModuMiniTurn offers precision internal coolant delivery, which improves chip control and tool life.

By feeding in the Y-axis direction, downward-facing chipbreaker directs the chip flow down and away from the cutting point.

INNOVATIVE MODULAR HEAD SYSTEM FOR SWISS MACHINES

ADD flexibility and productivity to your turning operations



e-catalog



For more information

MINIATURE SOLID BORING TOOLS FOR HIGH ACCURACY

ADD efficiency and profitability to your small boring operations as small as $\varnothing 0.6$ mm

Ingenious through-coolant sleeve design optimally directs 4 streams of coolant jets close to the cutting zone, providing long tool life, controlled chips formation and evacuation for better part quality.



TINY^{INI}TURN

Available with a wide selection of heads for boring, profiling, chamfering, threading and grooving

New **SH725** insert grade provides a good combination of wear and fracture resistance, ensuring long tool life and wear prediction.

Expanded indexable type holders, and inserts with 3D chip breaker for better chip control.

Ideal for machining extremely small diameter bores in a wide range of materials.



video



e-catalog



For more information

tungaloy.com 33



MAXIMUM SPEED AND EFFICIENCY AT MINIMUM SIZE

ADD more feed and speed in small milling operations for higher productivity



ADD^oFEED

*Small diameter high-feed milling cutter
for expanded application coverage,
featuring cutter bodies as small as $\varnothing 8$ mm*

Close pitch cutter design enables high efficiency machining.

Insert clamping screws are optimized to provide correct clamping force, sustaining high feed rates up to 1.2 mm per tooth.

Unique insert design with cutting edge inclination provides gradual workpiece engagement for light cutting action, while guiding chips away from the cutting area. Ideal for slot milling and pocketing applications.

Cutter bodies:

Shank type: **EXN02R...** (Short type)
EXN02RL** (Long type)

DCX = $\varnothing 8$ - $\varnothing 25$ mm

Modular type: **HXN02R...**

DCX = $\varnothing 8$ - $\varnothing 25$ mm



LNMU02-MM

Double-sided,
4-edged insert
APMX = 0.5 mm

video



e-catalog



For more information

tungaloy.com 35

HIGH PERFORMANCE AND PROFITABILITY IN HIGH-FEED MILLING OPERATIONS

ADD more cutting edges per insert to your machining operations



WXMU03-MM

Double-sided,
6-edged insert
APMX = 1 mm



DOF^{FEED}TRI

The cutter features a small entry angle, providing smooth access into the material, making it an ideal tool for long reach setups

Steep ramping capability makes the cutter ideal for pocketing and cavity milling applications.

Large effective cutter diameter leaves less uncut material.

Cutter bodies:

Bore type: **TXWX03** DCX = $\varnothing 40 - \varnothing 50$ mm

Shank type: **EXWX03** DCX = $\varnothing 16 - \varnothing 32$ mm

Modular type: **HXWX03** DCX = $\varnothing 16 - \varnothing 32$ mm



video



e-catalog



For more information

tungaloy.com 37

SMALLER, BETTER AND STRONGER

ADD indexable end mills with small Size-04 inserts for stability and productivity

TUNGALLOY **ORCE** FREC

Tool diameters as small as $\phi 6$ mm available as standard



Perfect replacement for solid carbide endmills

Extremely secure insert clamping, V shape design prevents insert movement during machining.

Cutter bodies:

Shank type:

EPAV04

DC = $\phi 6 - \phi 16$ mm



AVMT04-MM

Single-sided,
2-edged insert
APMX = 4 mm



RIGIDITY AND RELIABILITY FOR SMALL SHOULDER MILLING OPERATIONS

ADD productivity and surface quality with optimized wiper insert design



TUNG-TRI

Small 90° shoulder milling cutter down to $\varnothing 8$ mm for maximum performance

Close-pitch cutter for high efficiency machining.

The thick core cutter diameter provides increased rigidity.



TOMT04-MM

Single-sided,
3 edged insert
APMX = 3.5 mm
RE = 0.4, 0.8 mm

Cutter bodies:

Shank type: **EPA04R...** (Short type)

DC = $\varnothing 8 - \varnothing 25$ mm

EPA04RL** (Long type)

DC = $\varnothing 10 - \varnothing 25$ mm

e-catalog



For more information

tungaloy.com 41

BARREL-SHAPED INSERTS FOR PROFILE MILLING WITH OUTSTANDING PRODUCTIVITY

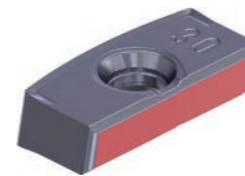
ADD a larger R cutting edge and multi-flute design for unparalleled performance



ADDFORCE BARREL

Reduces the number of passes by 40% compared to ball endmill with 10 mm radius without compromising the surface quality (cusp height).

Excellent clamping reliability with dove-tail back support



Large R for small cusp height

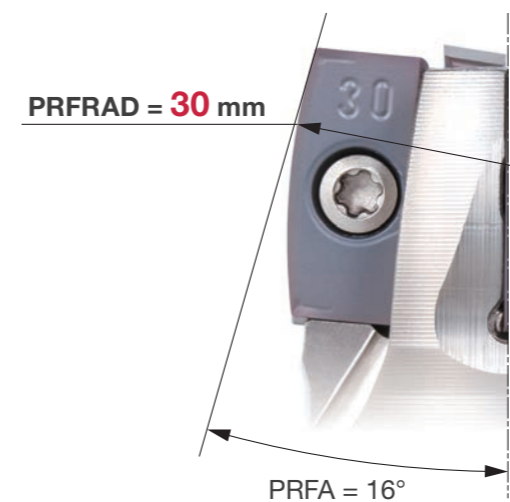
Cutter bodies:

Modular type: **HFZN10...**

DCX = $\varnothing 16 - \varnothing 40$ mm

ZNHU1003R30...

2-corner double sided insert



High productive geometry that provides a large stepover distance for reduced cusp height

ZNHU1003R20...

2-corner double sided insert



Profiling geometry with an increased tilt angle for enhanced application versatility



TUNGMEISTER



MORE THAN 13,000 POSSIBLE COMBINATIONS

ADD an extensive array of exchangeable milling heads for higher productivity

Easy and accurate head-holder coupling provides reduced tool change time and high accuracy of cutting point repeatability

Offers milling solutions for square shoulder milling, high feed milling, ball nose milling, chamfering, hole making, and slotting.

A flexible mix of heads and holders allows an optimum tool assembly in all end milling applications.



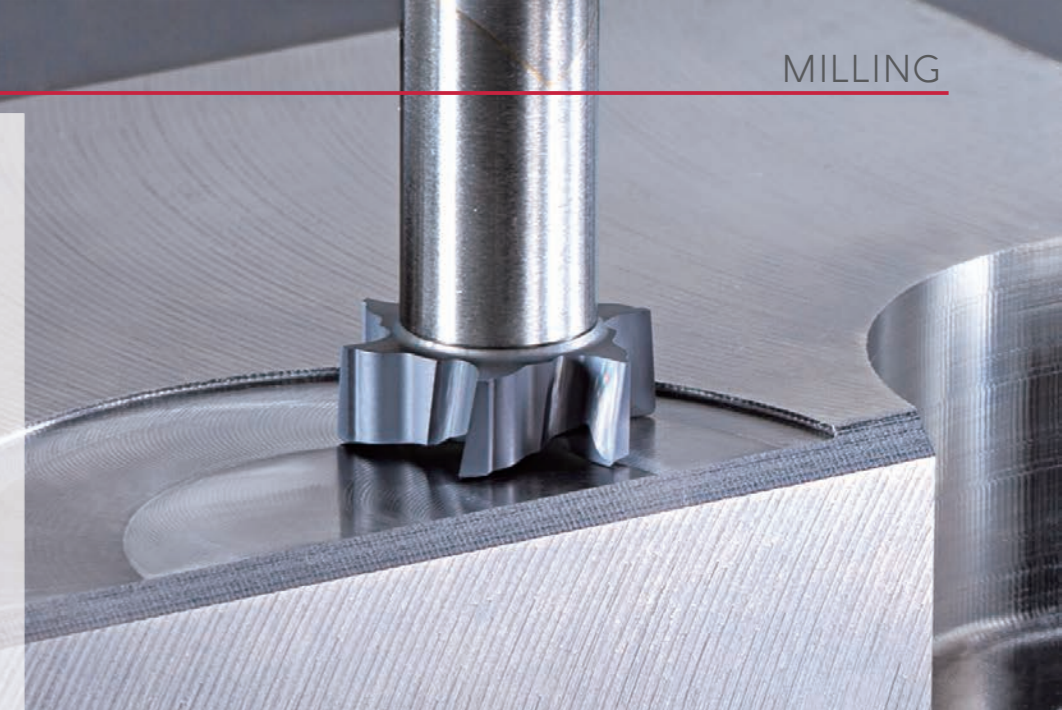
VFM
for face milling
DC = $\varnothing 12 - \varnothing 25$ mm



VEH
with long edges
for efficient square
shoulder milling
DC = $\varnothing 8 - \varnothing 32$ mm



VBO & VBN
with larger radius cutting
edges for 3D milling on
5-axis machines
DC = $\varnothing 8 - \varnothing 16$ mm



e-catalog

For more information

tungaloy.com 45

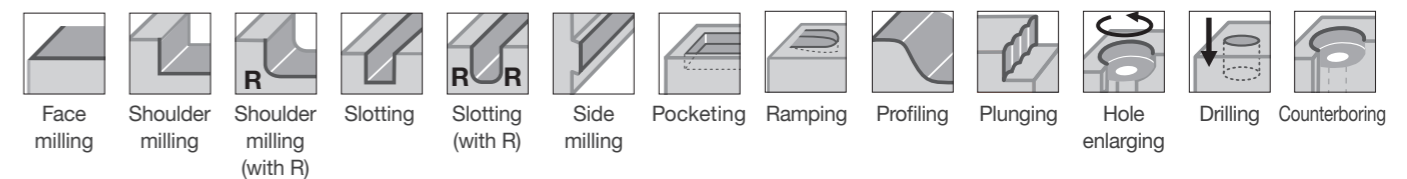
VERSATILITY MEETS EFFICIENCY

ADD more operations with a single tool, from shoulder milling to hole making



Innovative four-edged inserts provide ultimate machining flexibility and economy. All-round cutter with center cutting capability provides ultimate machining versatility

Applications capabilities



Cutter bodies:

Shank type: **EVLX08/10/12...** (Short type) DC = $\varnothing 16 - \varnothing 25$ mm

EVLX08/10/12L** (Long type) DC = $\varnothing 16 - \varnothing 26$ mm

Modular type: **HVLX08/10/12...** DC = $\varnothing 16 - \varnothing 25$ mm

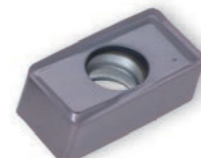
LXMU-MM



Size 08:
APMX = 7 mm
Tool dia.: $\varnothing 16 - \varnothing 17$ mm



Size 10:
APMX = 9 mm
Tool dia.: $\varnothing 20 - \varnothing 21$ mm



Size 12:
APMX = 11 mm
Tool dia.: $\varnothing 25 - \varnothing 26$ mm

A single insert can be used either for center edge or peripheral edge and can be used twice in each position – **four cutting edges for highest insert economy.**

Two center edges
Two peripheral edges



video



e-catalog



For more information

tungaloy.com 47

EXTENDED ^{ORCE} FMILL

Extended-flute rough milling cutter with indexable double-sided inserts with exceptional reliability for machining titanium alloys and cast iron



SXHU...



Peripheral insert
8 cutting edges

AXHU...



Bottom insert
4 cutting edges



Cutter bodies:

Bore type: **LPSX10...**

DC = \varnothing 50mm

APMX = 54, and 76.5 mm

Bore type (TungCap type): **LPSX10...C**

DC = \varnothing 54, and \varnothing 66 mm

APMX = 54 mm

Coolant jet is directed precisely to the cutting point through the fixed coolant nozzle, exerting maximum cooling effect for the cutting edge and workpiece.



ROUGHER AND EFFICIENT

ADD maximum productivity and cost efficiency for roughing operations of titanium alloy and cast iron parts



For more information

DRILLMEISTER

FOR DRILLING EFFICIENCY

ADD higher productivity in your drilling operations

Exchangeable head drill system for superior drilling performance and long tool life

Quick drill tip change for reduced machine downtime.

Tool inventory and management costs are significantly reduced as there is no need for regrinding.

Drill bodies are offered in a wide range of sizes and styles, allowing optimal tool assembly for secure and productive drilling.

Drill bodies:

NEW TID-M, Modular type:

Available in 2xD, and 3xD

TID-F, Flange type:

Available in 1.5xD, 3xD, 5xD, and 8xD

TID-R, Cylindrical shank type:

Available in 2xD, 3.5xD, 6xD, 8xD, and 12xD

TIDC:

Available in 3xD and 5xD suitable for use with TIDCF chamfer holders.

TIDCF chamfer holder: Available with 3 types of inserts in chamfering angles of 30°, 45°, and 60°



New Modular Type!

The right geometry for the right operation



DMP

Drill dia.:
ø6 - ø25.9 mm

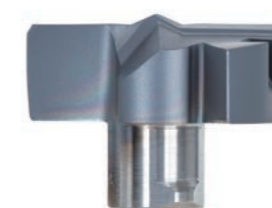
General purpose drilling head ideal for various drilling applications



DMC

Drill dia.:
ø6 - ø25.9 mm

High precision drilling head with double-margined drill periphery and self-centering chisel edge



DMF

Drill dia.:
ø6 - ø25.9 mm

180° flat edges for counterboring and flat bottoms



DMH

Drill dia.:
ø6 - ø25.9 mm

General purpose head with enhanced cutting edge



DMN

Drill dia.:
ø10 - ø19.5 mm

Drill head with sharp edges for non-ferrous materials

video



e-catalog



For more information

tungaloy.com 51



Through-coolant capability allows superior chip evacuation and long and predictable tool life.



WORLD'S SMALLEST EXCHANGEABLE DRILL HEADS SERIES

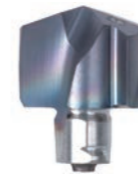
ADD superb performance in small drilling operations



ADD ^{EISTER} **DRILL**

Provides even better hole tolerances than solid drills

Drill bodies:
TID-R, Cylindrical shank type:
Available in 3xD and 5xD



DMP

Drill dia.:
ø4 - ø5.9 mm

General purpose drilling head ideal for various drilling applications



DMC

Drill dia.:
ø4 - ø5.9 mm

High precision drilling head with self-centering chisel edge



The tiny drill head is supplied in a dedicated user-friendly key, enabling easy and secure mounting with no setup time

video



e-catalog



For more information

tungaloy.com 53

DRILL^{ORCE}MEISTER

PRODUCTIVE HEAD-CHANGEABLE DRILL FOR DRILLING LARGE HOLES

ADD a new geometry to the efficient range of drill heads

Drill head with two effective cutting edges provides high productivity and reliability.



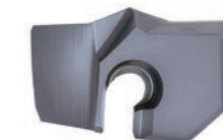
SMC
Drill dia.:
ø26 - ø33 mm
Self-centring geometry

Unique clamping system, the drill head change is possible without removing the drill body from the tool holder or the spindle, eliminating re-adjustments.



SMP
Drill dia.:
ø20 - ø41 mm
General purpose drilling head ideal for various drilling applications

Asymmetric shaped drill head not only secures stability in heavy machining but also error-proofs drill head installation.



SMF
Drill dia.:
ø20 - ø41 mm
For efficient drilling of flat-bottom holes

Drill bodies:
TIS, Flange type:
Available in 3xD, 5xD, and 8xD



e-catalog

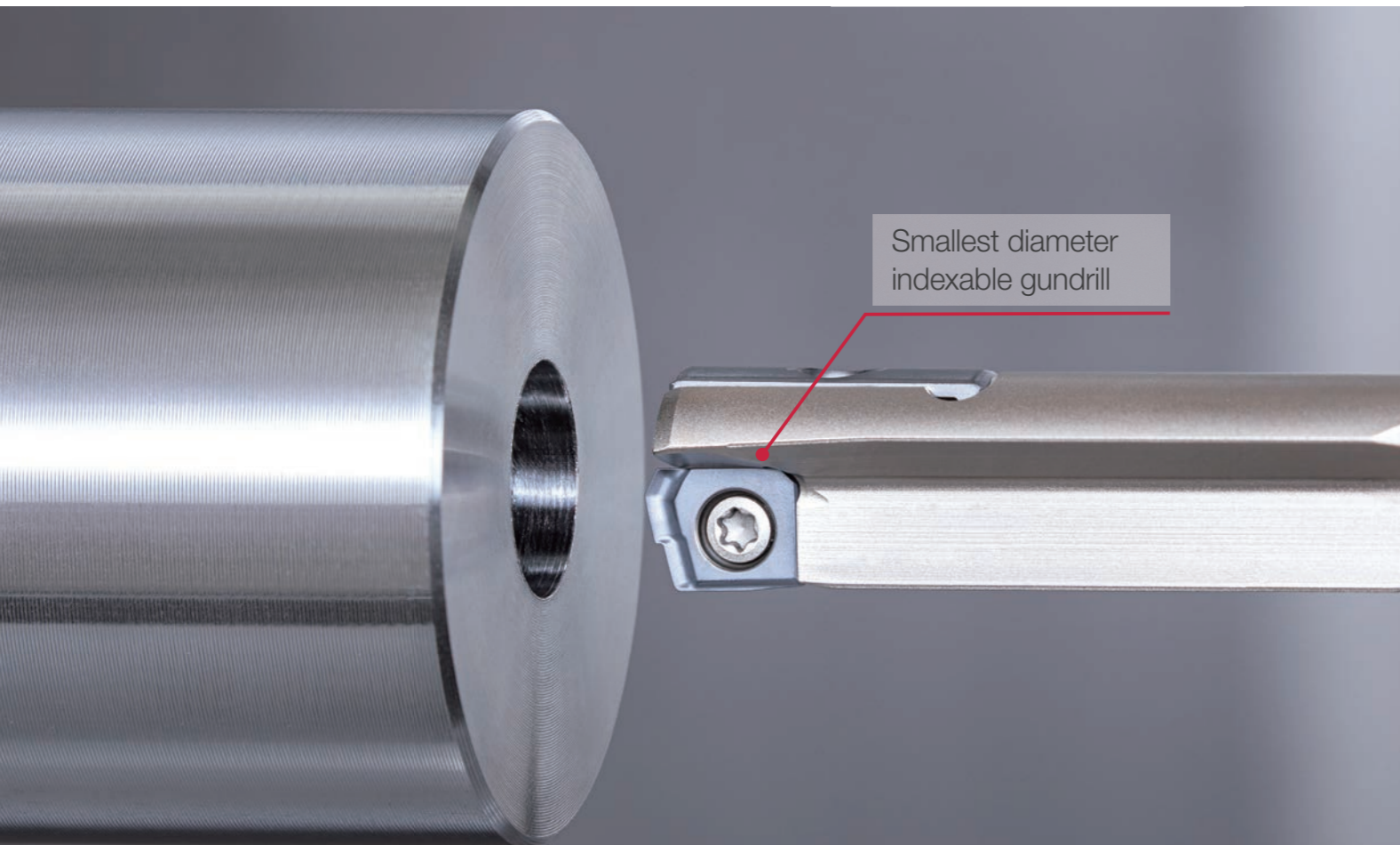
For more information

tungaloy.com 55

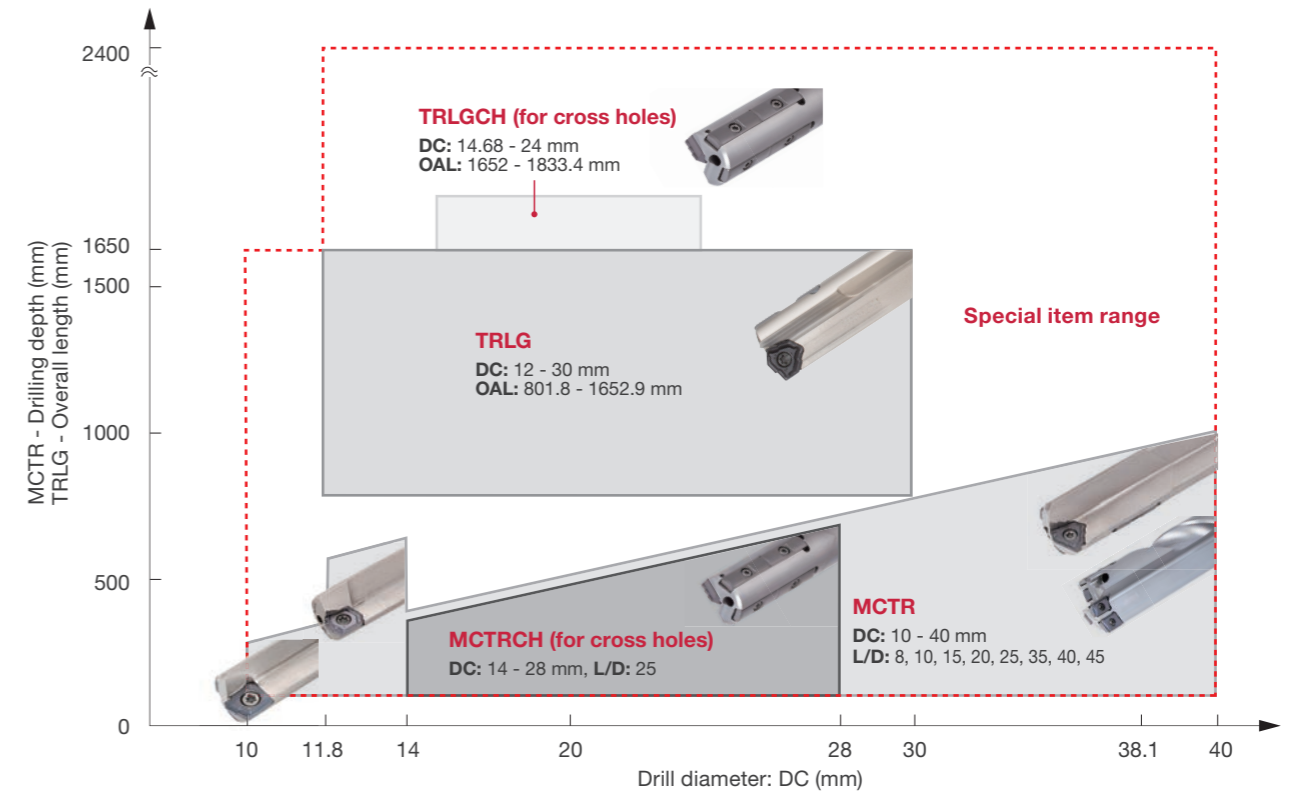
DEEPT^{RI}DRILL

THE SMALLEST AND DEEPEST HOLES WITH AN INDEXABLE GUNDRILL

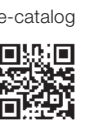
ADD a wide range of indexable deep drilling solutions to your machining needs



Remarkable deep drilling solutions for gundrill machines, lathe and CNC machining centers to cover applications from 10 mm to 40 mm



ZSGT	LOGT	TOHT	FBM...-I/C/ FBH
Drill dia.: ø10 - ø11.8 mm	Drill dia.: ø11.81 - ø13.99 mm	Drill dia.: ø14 - ø28 mm	Drill dia.: ø28.01 - ø40 mm
1 cutting edge chip splitter	2 cutting edges chip splitter	3 cutting edges chip splitter	2 cutting edges



For more information

THE FIRST STEP TO YOUR COST REDUCTION

Flexible, automated tool vending solution with a powerful tool management software to:

- Optimize stock levels
- Streamline purchasing
- Calculate cost per unit (CPU) and tool life
- Guarantee product availability



THE THREE PILLARS OF TUNGALOY'S ENVIRONMENTAL COMMITMENT

Tungaloy's latest innovations in cutting tools contribute to carbon neutrality

Produce *Dispose*



reducing insert volume and CO₂ emissions during the production processes

Use



decreasing raw materials through indexable inserts and exchangeable heads



cutting down electricity consumption with high-feed operations and less machine downtime



Worldwide Network



Head Office & Production Facilities in Japan

Tungaloy Corporation Head Office

11-1 Yoshima Kogyodanchi Iwaki 970-1144 Japan
Phone: +81-246-36-8501
Fax: +81-246-36-8542
www.tungaloy.com

Iwaki Plant

Products: Cutting Tools

Nagoya Plant

Products: Cutting Tools

Kyushu Plant

Products: PCBN
PCD Tools
Deep Hole Drills

Nirasaki Plant

Products: Cutting Tools
Friction Materials (TungFric)
Wear Resistant Tools
Civil Engineering Tools



Sales Channels

Tungaloy-NTK America, Inc.

3726 N. Ventura Drive
Arlington Heights
IL 60004, U.S.A.
Phone: +1-888-554-8394
Fax: +1-888-554-8392
www.tungaloy.com/us
https://www.ntkcuttingtools.com/us/

Tungaloy Canada

432 Elgin St. Unit 3, Brantford
Ontario N3S 7P7, Canada
Phone: +1-519-758-5779
Fax: +1-519-758-5791
www.tungaloy.com/ca

Tungaloy-NTK de Mexico S.A.

C/ Los Arellano 113
Parque Industrial Siglo XXI
Aguascalientes, AGS
Mexico 20290
Phone: +52-449-929-5410
Fax: +52-449-929-5411
www.tungaloy.com/mx
https://www.ntkcuttingtools.com/mx/

Tungaloy-NTK do Brasil Ltda.

Avd. Independencia N4158
Residencial Flora
13280-000 Vinhedo
São Paulo, Brazil
Phone: +55-19-38262757
Fax: +55-19-38262757
www.tungaloy.com/br
https://www.ntkcuttingtools.com/br/

Tungaloy-NTK Germany GmbH

Katzbergstr. 3a
D-40764 Langenfeld, Germany
Phone: +49-2173-90420-0
Fax: +49-2173-90420-19
www.tungaloy.com/de
https://www.ntkcuttingtools.com/de/

Tungaloy France S.A.S.

ZA Courtaboeuf - Le Rio
1 rue de la Terre de feu
F-91952 Courtaboeuf Cedex, France
Phone: +33-1-6486-4300
Fax: +33-1-6907-7817
www.tungaloy.com/fr

Tungaloy Italia S.r.l.

Via E. Andolfato 10
I-20126 Milano, Italy
Phone: +39-02-252012-1
Fax: +39-02-252012-65
www.tungaloy.com/it

Tungaloy Czech s.r.o

Turanka 115
CZ-627 00 Brno, Czech Republic
Phone: +420-532 123 391
Fax: +420-532 123 392
www.tungaloy.com/cz

Tungaloy Ibérica S.L.

C/Miquel Servet, 43B, Nau 7
Pol. Ind. Bufalvent
ES-08243 Manresa (BCN), Spain
Phone: +34 93 113 1360
Fax: +34 93 876 2798
www.tungaloy.com/es

Tungaloy Scandinavia AB

Bultgatan 38, 442 40
Kungälv, Sweden
Phone: +46-462119200
Fax: +46-462119207
www.tungaloy.com/se

Tungaloy Rus, LLC

Andropova avenue, h.18/7,
11 floor, office 3, 115432,
Moscow, Russia
Phone: +7-499-683-01-80
Fax: +7-499-683-01-81
www.tungaloy.com/ru

Tungaloy Polska Sp. z o.o.

Ul. Irysowa 1, 55-040 Bielany
Wrocławskie, Poland
Phone: +48 607 907 237
www.tungaloy.com/pl

Tungaloy-NTK U.K. Ltd

Gallan Park, Watling Street,
Cannock, WS110XG, UK
Phone: +44 121 4000 231
Fax: +44 121 270 9694
www.tungaloy.com/uk
https://www.ntkcuttingtools.com/uk/

Tungaloy Hungary Kft

Erzsébet királyné útja 125
H-1142 Budapest, Hungary
Phone: +36 1 781-6846
Fax: +36 1 781-6866
www.tungaloy.com/hu

Tungaloy Turkey

Serifali Mah.bayraktar
Bulvari Kule Sk. No:26
34775 Umraniye / Istanbul / Turkey
Phone: +90 216 540 04 67
Fax: +90 216 540 04 87
www.tungaloy.com/tr

Tungaloy Benelux b.v.

Tjalk 70
NL-2411 NZ Bodegraven Netherlands
Phone: +31 172 630 420
Fax: +31 172 630 429
www.tungaloy.com/nl

Tungaloy Croatia

Ulica bana Josipa Jelačića 87,
10430 Samobor, Croatia
Phone: +385 1 3326 604
Fax: +385 1 3327 683
www.tungaloy.com/hr

Tungaloy Cutting Tool (Shanghai) Co.,Ltd.

Rm No 401 No.88 Zhabei
Jiangchang No.3 Rd
Shanghai 200436, China
Phone: +86-21-3632-1880
Fax: +86-21-3621-1918
www.tungaloy.com/cn

Tungaloy-NTK Cutting Tools (Thailand) Co.,Ltd.

Interlink tower 4th Fl.
1858/5-7 Bangna-Trad Road
km.5 Bangna, Bangkok
10260
Thailand
Phone: +66-2-751-5711
Fax: +66-2-751-5715
www.tungaloy.com/th
https://www.ntkcuttingtools.com/th/

Tungaloy Cutting Tools (Taiwan) Co.,Ltd.

9F. No.293, Zhongyang Rd,
Xinzhuang Dist, New Taipei City,
24251 Taiwan
Phone: +886-2-8521-9986
Fax: +886-2-8521-8935
www.tungaloy.com/tw

Tungaloy Singapore (Pte.), Ltd.

62 Ubi Road 1
#06-11 Oxley BizHub 2
Singapore 408734
Phone: +65-6391-1833
Fax: +65-6299-4557
www.tungaloy.com/sg

Tungaloy Vietnam

LE 04-38, Lexington Residence
67 Mai Chi Tho, Dist. 2,
Ho Chi Minh City, Vietnam
Phone: +84-2837406660
www.tungaloy.com/sg

Tungaloy India Pvt. Ltd.

One International Center,
Unit # 902-A, 9th Floor,
Tower 1, Senapati Bapat Marg,
Elphinstone Road (West),
Mumbai -400013, India
Phone: +91-22-6124-8804
Fax: +91-22-6124-8899
www.tungaloy.com/in

Tungaloy Korea Co., Ltd

#1312, Byucksan Digital Valley 5-cha
Beotkkot-ro 244, Geumcheon-gu
153-788 Seoul, Korea
Phone: +82-2-2621-6161
Fax: +82-2-6393-8952
www.tungaloy.com/kr

Tungaloy Malaysia Sdn Bhd

50 K-2, Kelana Mall, Jalan
SS6/14, Kelana Jaya, 47301
Petaling Jaya, Selangor Darul Ehsan
Malaysia
Phone: +603-7805-3222
Fax: +603-7804-8563
www.tungaloy.com/my

Tungaloy Australia Pty Ltd

Unit 68 1470 Ferntree Gully Road
Knoxfield 3180 Victoria, Australia
Phone: +61-3-9755-8147
Fax: +61-3-9755-6070
www.tungaloy.com/au

PT. Tungaloy Indonesia

Kompleks Grand Wisata Block AA-
10 No.3-5 Cibitung
Bekasi 17510, Indonesia
Phone: +62-21-8261-5808
Fax: +62-21-8261-5809
www.tungaloy.com/id





11-1 Yoshima Kogyodanchi
Iwaki 970-1144 Japan
tungaloy.com

Distributed by:

